

RC SERIES INDUSTRIAL CRUSHER

Heavy Duty Industrial Crusher



Ruggedly built to outperform and outlast its competitors

The RC Series Industrial Crusher is ideal for processing a variety of large, heavy or bulky but friable materials. The large throat allows for easy in-feed of blocky materials. High tonnage rates are achieved with the lowest possible amount of wear and tear. The versatile RC Series can process a variety of recycled materials such as waste glass, steel and non-ferrous slags, and mineral processing waste, just to name a few



www.hammermills.com | info@hammermills.com | 1-800-447-4634

Technical Specifications

Model	Feed Opening	Footprint	Power
RC-2224	22" x 22" (550 x 550 mm)	80" x 38" (2030 x 965 mm)	40-50 hp (30-40 kw)
RC-2232	22" x 32" (550 x 800 mm)	80" x 46" (2030 x 1170 mm)	60-75 hp (45-55 kw)
RC-2240	22" x 40" (550 x 1020 mm)	80" x 54" (2030 x 1375 mm)	75-100 hp (55-75 kw)
RC-2248	22" x 48" (550 x 1220 mm)	96" x 64" (2425 x 1625 mm)	100 hp (75 kw)
RC-2260	22" x 60" (550 x 1525 mm)	96" x 78" (2425 x 1980 mm)	125 hp (95 kw)
RC-4460	34" x 60" (864 x 1524 mm)	142" x 92" (3607 x 2337 mm)	400 hp (300 kw)

* Capacity assumes normal operation conditions so as to produce ½" nominal product. Capacity will vary for larger or smaller particle size requirements.

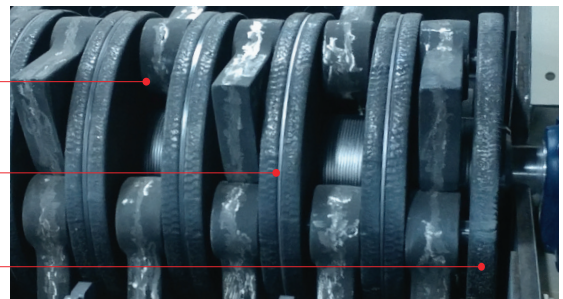
Key Features

- Designed with the heaviest, most wear-resistant components of any equipment of its kind, the RC Series industrial hammer mill provides by far the most economical crushing available.
- Fabricated from heavy ¾" to 1 ½" steel plate, all weld construction.
- Internal, replaceable breaker wear plate made from 1" thick AR-500 steel. Replaceable side liner plates made from ¾" abrasion resistant steel.
- Heavy duty abrasion-resistant bar grate available in many sizes to produce the exact finished particle size you desire.
- Safety interlock package prevents mill from operating when mill is in an open position for maintenance.
- Mill top hinges open hydraulically for easy access to the mill's interior for maintenance and inspection.

Hammers up to 90 pounds each are two way reversible cast manganese for the longest possible wear life.

Double 1 ½" wide rotor disks with hard surfacing around the entire circumference.

Locking hammer rod collars prevent undue wear-and-tear to hammer rods.



61 Depot Street | Buffalo, NY 14206

