

# KE Series Dual Shaft Shredder

The low speed, high torque KE Series Shredder is ruggedly constructed to process the toughest materials with ease. Dual shaft cutters reduce material by compression and shearing action, providing an ideal primary grind and consistent end product for a wide variety of applications.

## Applications:

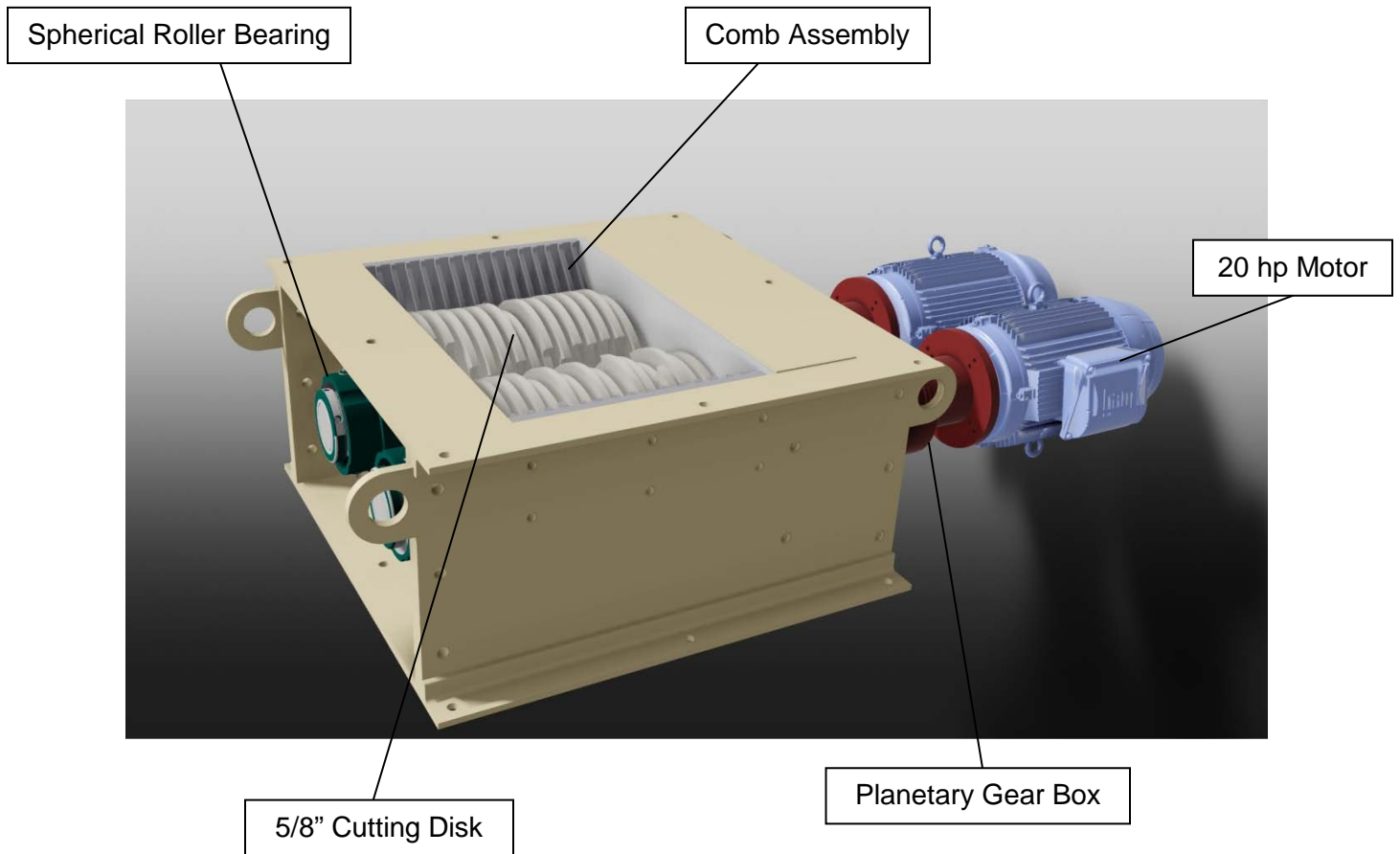
- C&D Waste
- Electronics
- Food & Food Waste
- Metals
- Paper & Cardboard
- Plastics
- Volume Reduction
- Wood



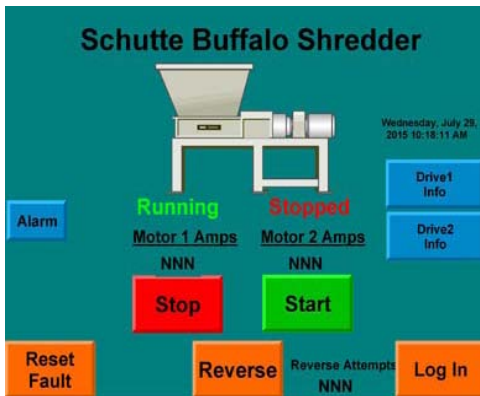
## Key Features:

- Long wearing heat treated tool steel cutters reduce maintenance
- Direct drive, in-line planetary gearbox allows for optimal efficiency
- Network capable touch screen control panel In-feed hoppers and support stands designed to customer specification

**Schutte**Buffalo



### Touch Screen Panel



Allen Bradley™ Drives / PLC  
 Ethernet environment, network capable  
 shop floor supervisory system. One  
 touch control of all system components.

### Technical Specifications

	KE 2020	KE 2032
In-feed opening	20" x 20"	20" x 32"
Number of cutters	28"	30
Cutter diameter	9"	15"
Cutter width	5/8"	5/8"
Rotor speed	31-37 rpm	24-28 rpm
Drive motor horsepower	15/15 hp	20/20 hp
Weight	4500 lbs	4500 lbs
Voltage	230/460 VAC	230/460 VAC

61 Depot St Buffalo, New York 14206 USA  
 www.hammermills.com 1.800.447.4634 716.855.1555

# SchutteBuffalo