

SchutteBuffalo

HAMMER MILL

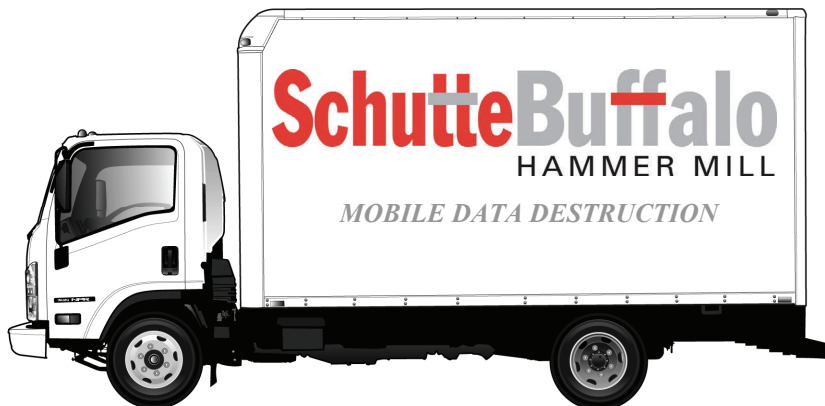
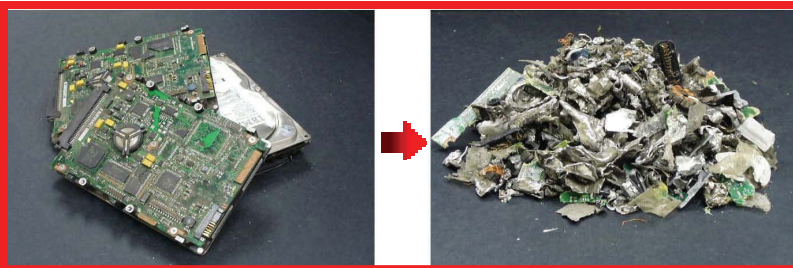
PRESENTS—MOBILE TOTAL DATA DESTRUCTION

The E-Cycler

NAID VENDOR



SUPPORT VENDORS WHO
SUPPORT THE INDUSTRY



Complete self-contained mobile shredder system for the confidential destruction of computer hard-drives and other proprietary electronics. Truck-mounted E-Cycler is complete with everything needed to provide secure onsite services to your clients. See details on back page.

Our Mobile E-Cycler system, capable of shredding hard drives at a rate of approximately 30 per minute, is available completely installed including truck, or you can order the system to be installed in your own vehicle (vehicle must comply with minimum specifications). The features below are all included in this package, but we are fully capable of custom-configuring this system to best suit your needs.

The E-Cycler

- ◆ WA-20-H E-Cycler with 30-HP/460v motor
- ◆ Soft-start motor control panel
- ◆ Step-down single-phase transformer and 110v outlets
- ◆ Kohler 40KW diesel genset with enclosure & remote starter
- ◆ Feed conveyor
- ◆ Dust-collection system w/cleanup hose
- ◆ Degausser (demagnetizes hard drives)
- ◆ Steel collection canisters w/quick release lids (4)
- ◆ Drum dollies (4)
- ◆ Canister storage rack
- ◆ Toolbox/workbench
- ◆ Lighting: (8) high-output fluorescents with sleeves
- ◆ Exhaust fan
- ◆ Auxiliary electric heater (460v)
- ◆ Electrical cord reel for power tools
- ◆ Handcart (600# capacity)
- ◆ Fire-extinguishers (2)
- ◆ First-aid kit
- ◆ Hearing & eye protection
- ◆ Safety decals



Please direct all inquires to:

Dick Hambridge
Domestic & International Sales
dhambridge@hammermills.com
Schutte Buffalo Hammermill, LLC
61 Depot Street
Buffalo, NY 14206 USA
Toll-free: (800) 447-4634
(716) 855-1555/Office
(716) 855-3417/FAX
www.hammermills.com

GMC ISUZU

- ◆ GMC W5500 (Isuzu W5S042 NQR) truck with 176" WB
- ◆ No Commercial Driver's License (CDL) required
- ◆ Highly-maneuverable cab-over design for urban usage
- ◆ 317 cu.in./205 hp turbocharged-intercooled diesel engine
- ◆ Air-conditioned cab
- ◆ 6-speed automatic transmission
- ◆ AM/FM stereo radio
- ◆ Fire extinguisher in cab
- ◆ Roof-mounted air deflector
- ◆ Engine shutdown system
- ◆ 20' Morgan aluminum van body with Whiting roll-away door
- ◆ 2000 lb. capacity hydraulic liftgate (tuck-away storage)

SchutteBuffalo
HAMMER MILL

~ Manufacturing size-reduction equipment since 1928 ~